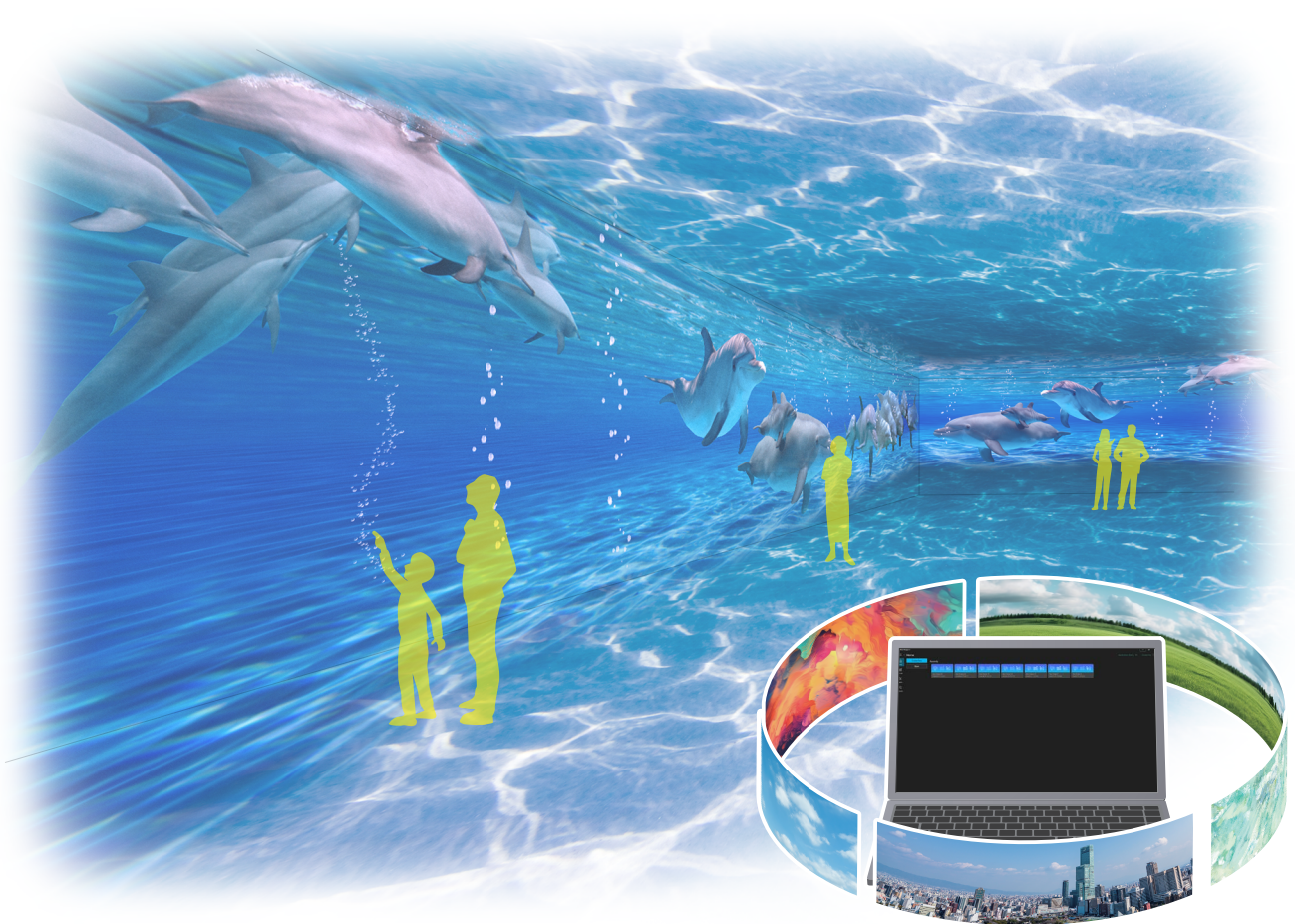


Operating Instructions

Introduction

Visual Software Suite

Windows



Read before use

This manual provides an overview of Visual Software Suite and describes the procedure up until the start of operating each function.

The manuals for this software include the following manuals in addition to this “Introduction” manual. Please refer to them as well.

“Installation and Adjustment” and “Content Management”

Thank you for purchasing this Panasonic product.

- Before using this software, please read the instructions carefully.

Contents

- Precautions and Disclaimers 3
- What You Can Do with “Visual Software Suite” 4
- Preparation 5
 - Confirm the computer in use..... 5
 - System requirements..... 5
 - Necessary environment for computers to be connected 5
 - Confirm the device in use 6
- Installing/Uninstalling the Software 7
 - Installation procedure 7
 - Installing “Visual Software Suite” 7
 - Uninstallation procedure 8
- Starting and Exiting the Application 9
 - Starting the application..... 9
 - Exiting the application 9
- Common Settings 10
 - Home screen 10
 - Application menu and items..... 12
 - [Application Setting] screen..... 14
 - [License Management] screen 17
- Frequently Asked Questions..... 18
- Trademark..... 19

Precautions and Disclaimers

- Precautions regarding security

When using the “Visual Software Suite”, security breaches of the type described below are conceivable.

- Leakage of your private information via this software
- Illegal operation of this software by a malicious third-party
- Harm to or cessation of operation of this software by a malicious third-party

Be sure to implement sufficient security measures.

- Make sure the password is as hard to guess as possible.
 - Change the password periodically.
 - Panasonic Projector & Display Corporation and its affiliated companies never directly ask customers for their password. Do not give out your password even if directly asked by a third-party representing themselves as Panasonic Projector & Display Corporation.
 - Run Windows Update regularly to keep your computer up to date.
 - Always use on a network that has safety protection such as a firewall implemented.
 - Set the password for the computer you are using in order to set limits on user accessibility.
- This software makes use of the following software.
 - (1) Software developed independently by Panasonic Projector & Display Corporation
 - (2) The Independent JPEG Group's JPEG software
 - This software is based in part on the work of the Independent JPEG Group.
 - (3) Software owned by a third party and licensed to Panasonic Projector & Display Corporation
 - (4) Software licensed under GNU LIBRARY GENERAL PUBLIC LICENSE Version 2.0 (LGPL V2.0)
 - (5) Software licensed under GNU LESSER GENERAL PUBLIC LICENSE Version 2.1 (LGPL V2.1)
 - (6) Open-source software other than software licensed under the terms and conditions of LGPL V2.0 or LGPL V2.1

Software categorized as (4) to (6) above is distributed in the hope that it will be useful, but WITHOUT ANY WARRANTY, including without even the implied warranty of MERCHANTABILITY or FITNESS FOR A PARTICULAR PURPOSE.

For details, refer to the license terms and conditions for the respective open-source software.

The open-source software licenses can be checked in this software.

For at least three (3) years from the release of this software, Panasonic Projector & Display Corporation will give to any third party who contacts us at the contact information provided below, for a charge no more than our cost of physically performing source code distribution, a complete machine-readable copy of the corresponding source code covered under LGPL V2.0, LGPL V2.1, or other license with the obligation to do so, as well as the respective copyright notice thereof.

Contact Information: oss-cd-request@gg.jp.panasonic.com

- Media processor and media processor board manufactured by Panasonic Projector & Display Corporation are both referred to as “media processor” in this manual.
- The illustrations and display examples used in this manual may differ from the actual product.
- Reference pages
Reference pages in this manual are indicated as (➡ page 00).
- Panasonic Projector & Display Corporation cannot be held liable for damages arising from the corruption or loss of the data of a projector, media processor, or other connected device. Please note that you are strongly recommended to save the setting information saved to the device also on your computer.
- Media processors are not sold in some regions. Users residing in such regions will not be able to use functions that utilize a media processor.

What You Can Do with “Visual Software Suite”

■ Installation and Adjustment functions

Advanced screen adjustments such as the following can be made using a projector or media processor manufactured by Panasonic Projector & Display Corporation.

If you use Auto Screen Adjustment, you can make multiple adjustments, including geometry correction, by performing operations according to on-screen instructions.

The functions that can be supported differ between each of a projector and media processor.

✓: Supported (Blank): Not supported

Function	Projector	Media processor
Auto screen adjustment	✓	✓
Geometry correction	✓	✓
Content extraction		✓
Edge blending	✓	✓
Black level adjustment	✓	✓
Color matching	✓	✓
Masking	✓	✓
Lens control	✓	
Uniformity	✓	
Brightness adjustment	✓	

For details, refer to “Visual Software Suite Operating Instructions – Installation and Adjustment”.

■ Content management functions

Content playback can be performed automatically by creating a playlist that combines multiple still image, movie, and other content together as a single material and setting a playback schedule using a media processor.

- Registering content
- Creating playlist
- Checking playlist
- Creating timetable
- Creating schedule
- Sending schedule

For details, refer to “Visual Software Suite Operating Instructions – Content Management”.

Preparation

Confirm the computer in use

System requirements

The computer must meet the following requirements in order to use the supplied software.

OS :	Microsoft Windows 11 (Windows 11 Home/Pro 64bit) Windows 10 (Windows 10 Home/Pro 64bit) Compatible with English or Japanese language versions of the above operating systems.
CPU:	Intel Core i5 (4-core) or better
Memory:	16 GB or more
Available disk space:	16 GB or greater (further available space is necessary to save content data)
USB port:	USB 2.0 or higher (when performing auto screen adjustment using a camera connected by USB)
LAN port:	100Base-TX/1000Base-T
Display:	Resolution of 1 600 × 900 pixels or higher using High Color (16-bit) or higher
Switching hub:	Must support PoE (Power over Ethernet) power supply (IEEE802.3af), and have a power supply compatible port that supports 1000BASE-T (when performing auto screen adjustment using a camera connected by LAN)

Note

- Smooth playback of movies may not be possible even in the above environment. When handling high-resolution movies, we recommend an Intel Core i5 CPU or better that is 11th generation or later.
- Note that the operation is not guaranteed when used in any environment other than above, or when a home-made computer is used.

Proper operation cannot be guaranteed for all computers even if they satisfy the above requirements.

Necessary environment for computers to be connected

Make sure to confirm the following before connecting a projector, media processor, or other device to the computer.

Computer with a built-in LAN function

- Is your LAN switched on?

Computer without a built-in LAN function

- Is your LAN adapter properly recognized?
Please install the LAN adapter driver beforehand.
For details on how to install the driver, please refer to instructions accompanying the LAN adapter.
- Is your LAN adapter switched on?

Note

- Operation is not guaranteed for all LAN adapters and built-in LAN adapters in the computers.

Confirm the device in use**■ Supported devices**

For details on the devices supported by this software (Visual Software Suite), check the software download page of the Panasonic Professional Display and Projector Technical Support website.

<https://docs.connect.panasonic.com/projector/pass>

To access the Panasonic Professional Display and Projector Technical Support website, you must be registered with PASS*¹ and log in to it.

*¹ PASS: Panasonic Professional Display and Projector Technical Support Website.

Installing/Uninstalling the Software

Installation procedure

Before starting the installation, close all applications running in Windows. Failure to do so may result in this software not being able to be installed correctly.

Installing “Visual Software Suite”

Log in to Windows and install the software using an account with administrator rights.

1 Download the installation file.

Log in to PASS on the following website, click [Download], and follow the on-screen instructions to download the software.

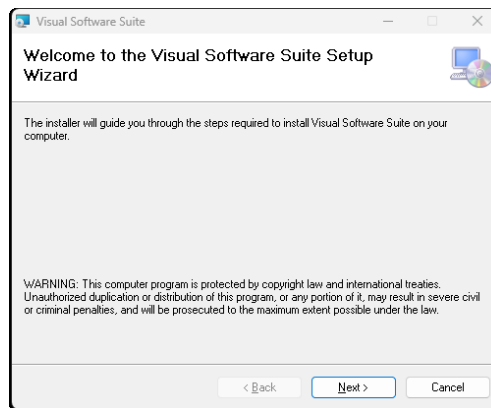
<https://docs.connect.panasonic.com/projector/pass>

2 Extract the downloaded “VSS_Vxxx_Setup.zip.”

“Vxxx” in the file name indicates the software version.

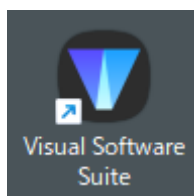
3 The installer inside the folder that is created by extracting starts up.

Double-click “Setup_Vxxx.msi” to start the installer.



Follow the on-screen instructions to install the application.



As soon as the installation process is completed, a shortcut icon is created on the desktop.




Uninstallation procedure

Log in to Windows and uninstall the software using an account with administrator rights.

■ For Windows 11

1 Select  → [ Settings].



2 Select [Apps] menu in the menu on the left.

If the menu is not displayed on the left side because the width of the [Settings] window is narrow, maximize the [Settings] window or click  displayed at the top left of the [Settings] window. The menu is displayed.

3 Click [Installed Apps].

4 Click  displayed at the right of [Visual Software Suite], and click [Uninstall].

■ For Windows 10

1 Select  → [ Settings] → [Apps] in Settings of Windows.

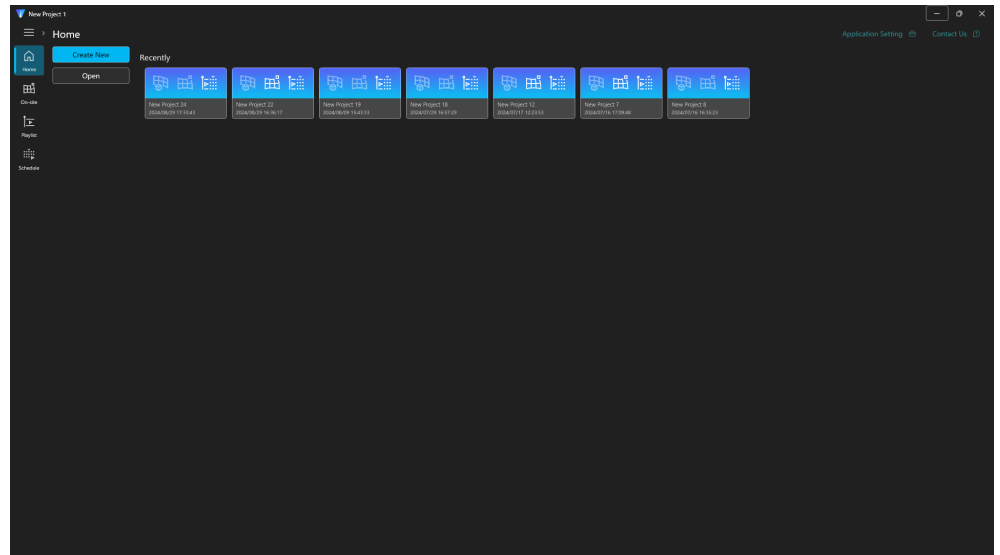
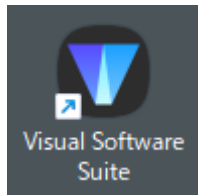
2 Select [Visual Software Suite], and click [Uninstall].

Starting and Exiting the Application



Starting the application

Double-click the shortcut icon on the desktop.

When the software starts, the Home screen is displayed.

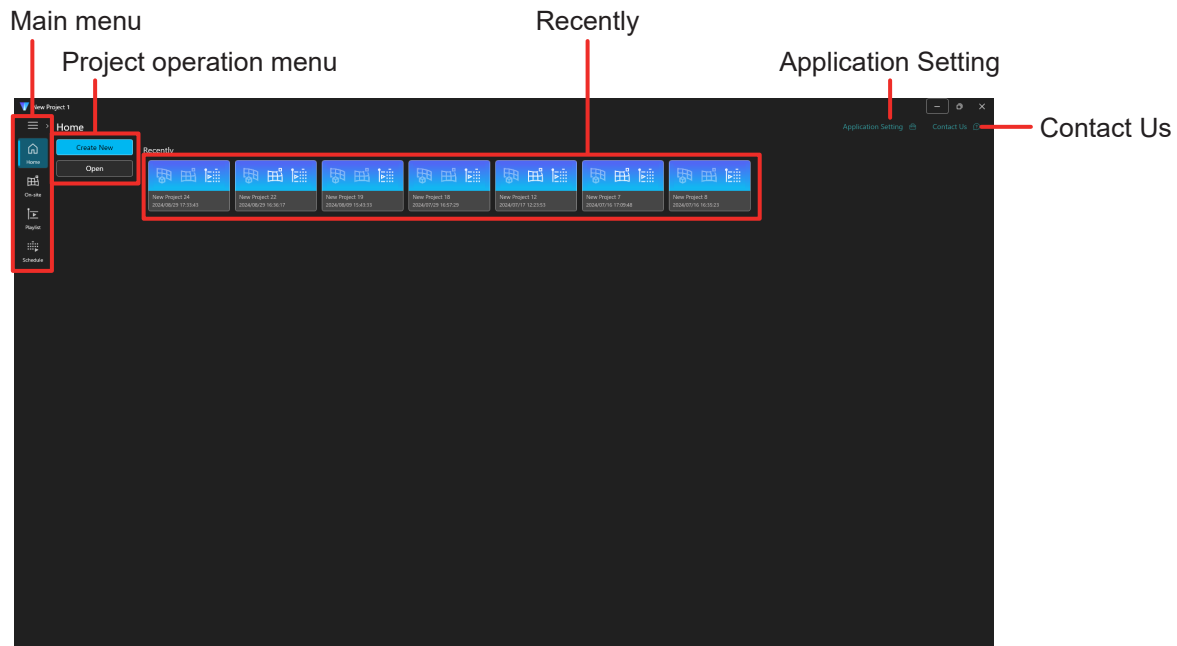


Exiting the application

Click [] → [Exit] on the Home screen to exit the application. Alternatively, click the  button at the top right of the screen.

Common Settings

Home screen



■ Main menu

≡ Application menu

Displays items for operating this software. For details, refer to “Application menu and items” (➔ page 12).

🏠 Home

Displays the Home screen.

🏢 On-site

Displays the Installation and Adjustment screen. Perform geometric distortion correction, edge blending, and other screen adjustments. For details, refer to “Visual Software Suite Operating Instructions – Installation and Adjustment”.

📺 Playlist

Displays the Playlist screen. Register still image and movie content, and create a playlist that combines multiple content together as a single material. For details, refer to “Visual Software Suite Operating Instructions – Content Management”.

📅 Schedule

Displays the Schedule screen. Create a timetable for one day of content playback or a schedule for a month or year, and output it to the media processor. For details, refer to “Visual Software Suite Operating Instructions – Content Management”.

■ Project operation menu

Displays operation menu items for project files. The operations can also be performed from the [File] menu of the Application menu.

- **[Create New]**

Create the new project file.

- **[Open]**

Open an existing project file.

The project files are divided according to each function that makes up the Visual Software Suite, but selecting any one of the files will load all of the project files saved in the same folder.

■ Recently

Displays the project files that were recently used.

■ Application Setting

Displays a screen for configuring the settings of this software. For details, refer to “[Application Setting] screen” (➡ page 14).

■ Contact Us

Click this shortcut icon to display the “Support” page in the web browser.

Application menu and items

Click the Application menu () at the top left of the screen to display the following menu items.

■ [File] menu

[Create New]

Create the new project file.

[Open]

Open an existing project file.

The project files are divided according to each function that makes up the Visual Software Suite, but selecting any one of the files will load all of the project files saved in the same folder.

[Save File]

Save the currently open project file by overwriting.

[Save as]

Save the currently open project file by specifying a file name and location.

[Import]

Import a project file created in Geometry Manager Pro for FMP, Content Management Software for FMP or Geometry Manager Pro to this software.

Note

- Information about the media, playlist, and timetable created in Content Management Software for FMP is imported, but the schedule settings are not imported.
Create a schedule in this software after importing completes. For details on creating schedules, refer to “Visual Software Suite Operating Instructions – Content Management”.

■ [Setting] menu

[Application Setting]

Displays a screen for configuring the settings of this software. For details, refer to “[Application Setting] screen” (➡ page 14).

[License Management]

Display the license management screen of this software. For details, refer to “[License Management] screen” (➡ page 17).

■ [External Application] menu

[Projector Network Setup Software]

Start Projector Network Setup Software. This software allows you to simultaneously configure administrator accounts, network information such as IP addresses, and projector names for multiple projectors that are connected to the same network.

For how to operate Projector Network Setup Software, refer to the operation guide. Obtain the operation guide by logging in to PASS on the following website, clicking the [Download] button on the top page, and following the on-screen instructions.

<https://docs.connect.panasonic.com/projector/pass>

■ [Help] menu**[Contact Us]**

Display the [Contact Us] screen. Click this shortcut icon to display the “Support” page in the web browser.

[Version Information]

Display the version information for this software.

[Software License]

Display the license agreements for the open-source software used by this software.

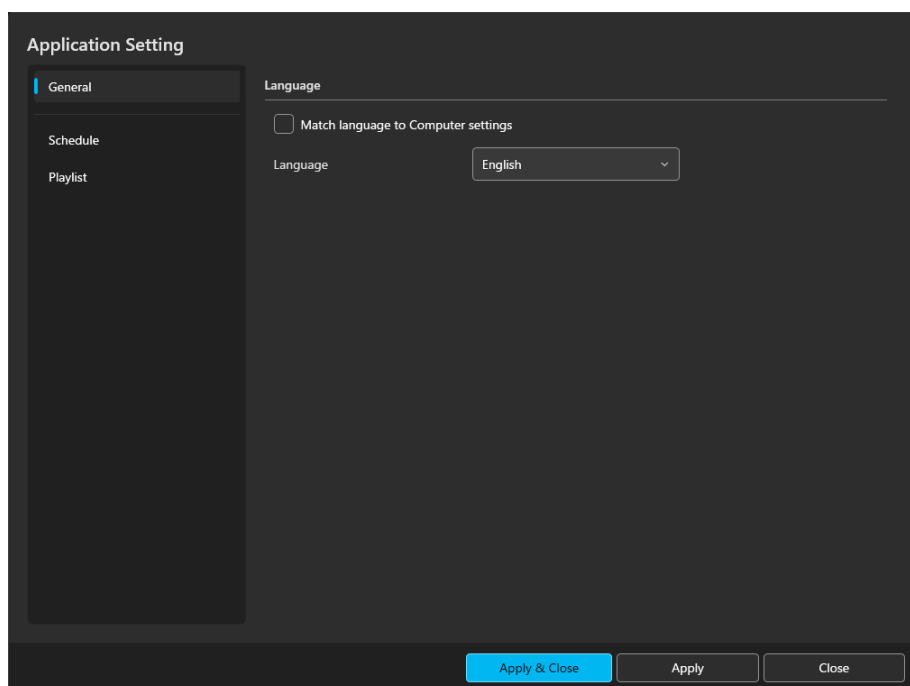
■ [Exit]

Exit this software.

[Application Setting] screen

Configure the general settings, such as the display language of the software and the display format for the dates and times displayed in schedules.

■ [General]



[Language]

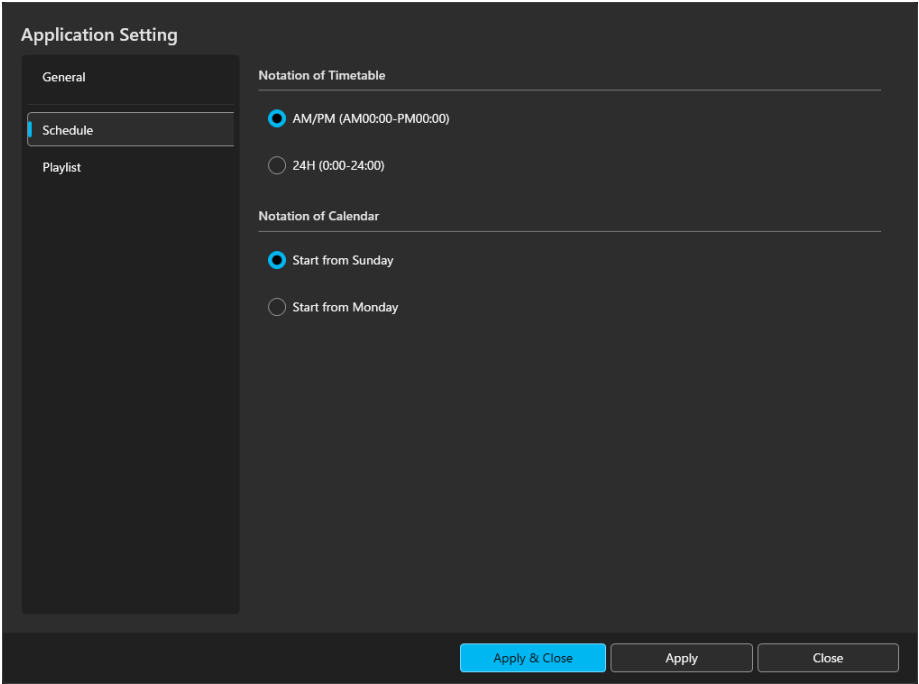
If you place a check mark in the [Match language to Computer settings] checkbox, the display language is selected automatically to match the language setting of the computer with this software installed.

For a computer with the language set to Japanese: Display is in Japanese

For a computer with the language set to other than Japanese: Display is in English

If you clear the check mark from the [Match language to Computer settings] checkbox, you can specify the display language of this software in [Language].

■ [Schedule]



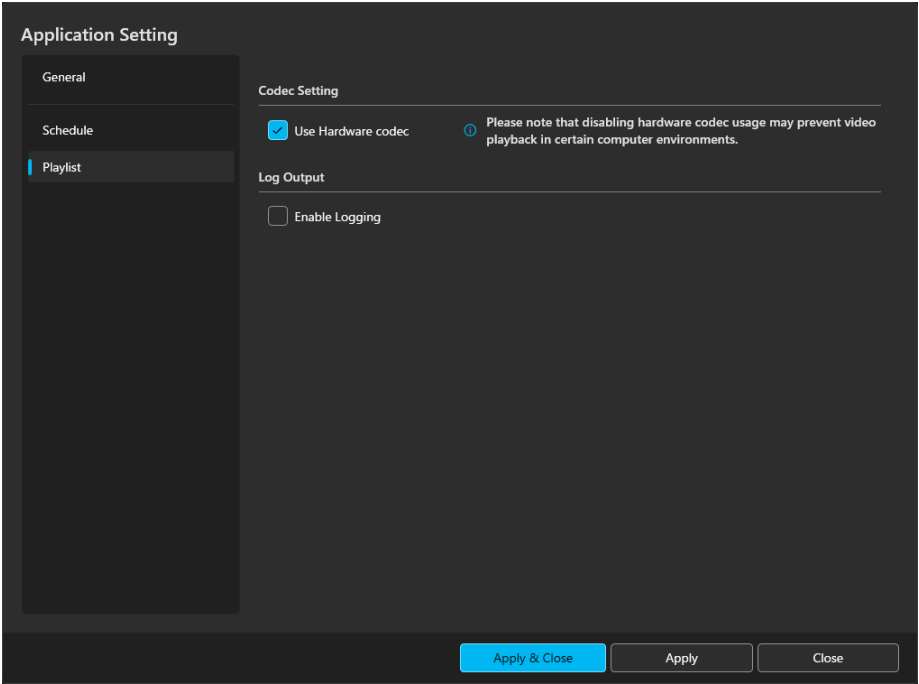
[Notation of Timetable]

Set the display format for timetables (12-hour system or 24-hour system).

[Notation of Calendar]

Specify the display format for the calendar (start on Sunday or start on Monday).

■ [Playlist]



[Codec Setting]

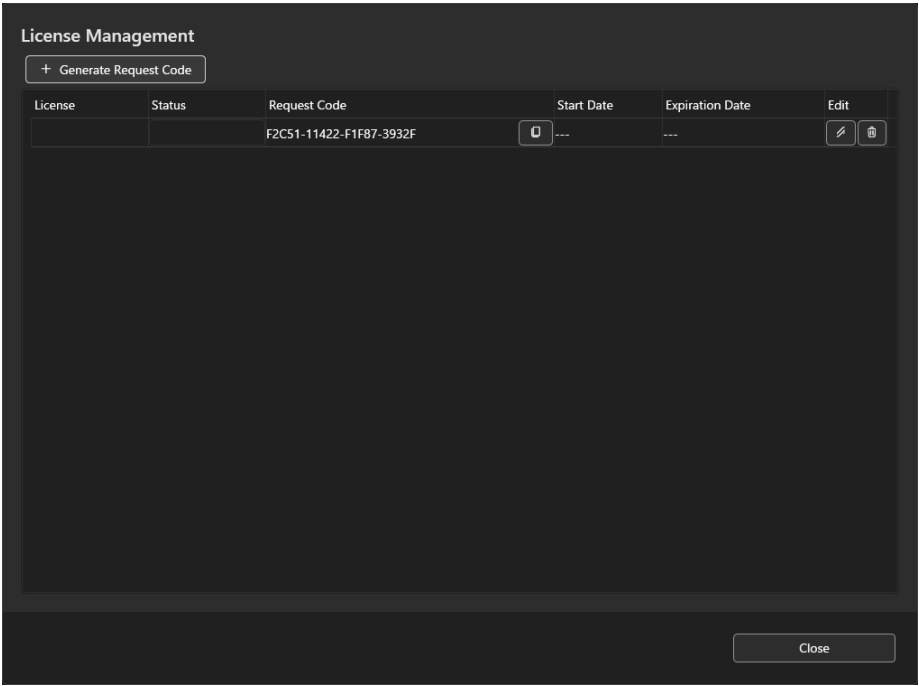
If you place a check mark in the [Use Hardware codec] check box, processing is performed using the hardware codec.

[Log Output]

This is used by service personnel. If you place a check mark in the [Enable Logging] checkbox, logs are output.

[License Management] screen

Perform license management of this software. The functionality can be expanded by activating the software.



[Generate Request Code]

Issue a request code for performing activation.
When a request code is issued, an unused request code will be added to the license list.

[Edit]

The software can be activated by entering the activation code corresponding to the request code to be used.
For details on obtaining the activation code, consult with service personnel.

Frequently Asked Questions

Review the following points.

The software does not operate properly

- The software requires .NET 8.0 to be installed in the computer to be used. Download it from the Microsoft website if it is not installed.
- This software may not operate properly when it is used with an account that does not have administrator rights. If this happens, log in to Windows using an account with administrator rights, and then use the software.

Trademark

- Microsoft and Windows are registered trademarks or trademarks of Microsoft Corporation in the United States and/or other countries.
- Other company names, product names or other names noted in this manual are trademarks or registered trademarks of the respective companies. Note that ® and TM marks are not indicated in the text of this manual.

Note

- Unauthorized use or reproduction of part or all of this software and manuals is strictly prohibited.
- Panasonic Projector & Display Corporation cannot be held liable for any effects resulting from the use of this software and manuals.
- Panasonic Projector & Display Corporation reserves the right to revise this software specifications and manual contents without notice.

Panasonic Projector & Display Corporation

Web Site : <https://docs.connect.panasonic.com/projector>

© Panasonic Projector & Display Corporation 2025

W1024AM3085 -PS